

NUAIRE

Neonaire

NE25BT/BTX

Shower Fan & Light

INSTALLATION

NUAIRE

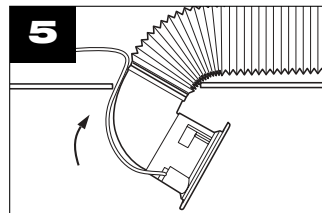
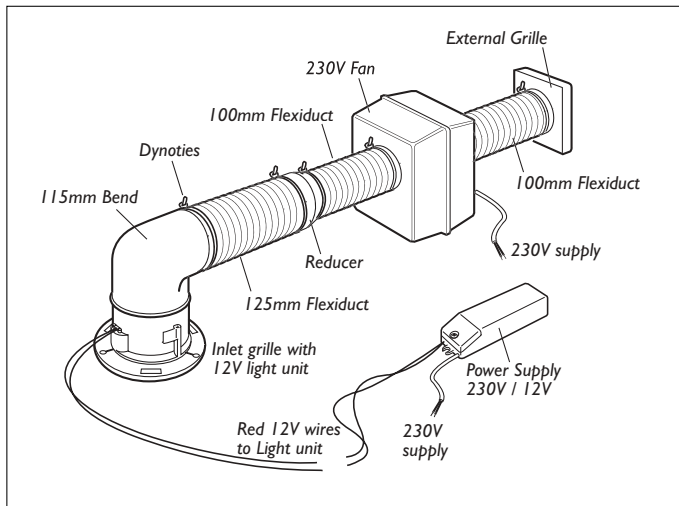
NuAire Limited
Western Industrial Estate
Caerphilly, United Kingdom
CF83 1XH
Telephone: 029 2088 5911
Facsimile: 029 2088 7033
Email: info@nuaire.co.uk
www.nuaire.co.uk



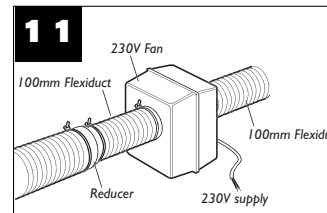
The EMC directive: 89/336/EEC
with modification 92/31/EEC
The low voltage directive 73/23/EEC

Leaflet 671139

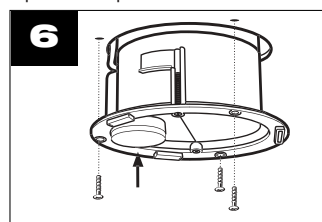
SEPTEMBER 2001



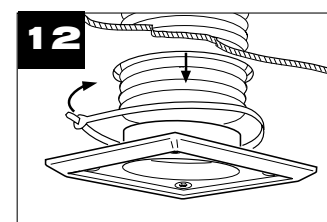
Push the complete assembly up through the hole. Make sure the lamp wiring is not impeded. Unclip internal intake finisher.



Install the 230V fan (instructions included with fan) and connect to 100mm ducting.



Mark and plug three holes using the three fixing holes on the light unit. Secure by using three No. 6 countersunk screws.



Prepare hole through wall or soffit. Push through unattached end of the flexiduct attach it to the grille spigot using the tie.

General Notes

If the system is serving a room containing a fuel burning appliance of a non-balanced flue design, it is the responsibility of the installer to ensure that sufficient replacement air is provided to prevent products of combustion from being drawn down the flue when the fan/ light unit is operating.

The unit should not be sited where it would be subject to a direct source of heat in excess of 40°C.

Once fitted into ceiling void or loft space, do not cover light body, fan or 12V power supply unit with any insulating materials.

Minimum void height when fitting into ceiling space is 250mm.

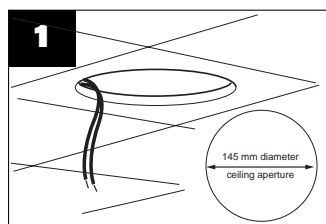
ISOLATION

Note that the unit must be provided with a means of isolation (by others) for maintenance purposes etc. An RCD trip device must be included between the power supply unit and the mains if the unit is fitted in zone I as defined in IEE regulations.

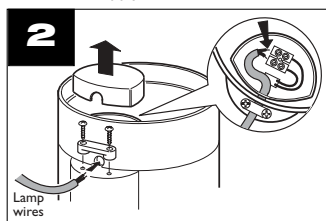
Refer to Wiring Instructions overleaf.

Installation IMPORTANT

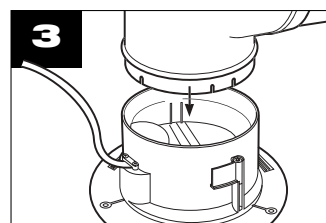
The installation must be carried out by qualified personnel in accordance with the appropriate authority and conforming to all statutory and governing regulations eg. IEE, COHSE etc.



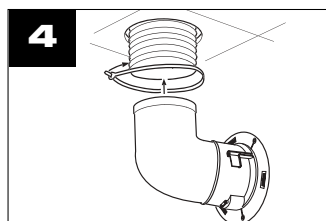
Cut a hole in the ceiling to the size indicated and thread through the two red 12V Power Supply unit cables.



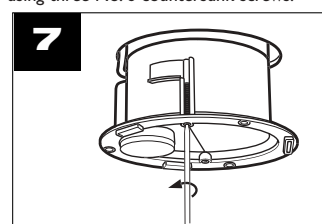
To wire in the light, lift off the cover. Loosen the clamp on the case side. Bring in the two red 12V cables and wire as shown.



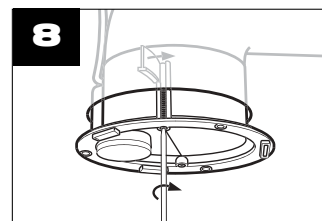
Push one end of the 90° bend onto the light unit and click fit.



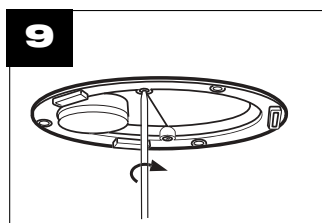
Pull the ducting down through the ceiling and attach with the tie provided.



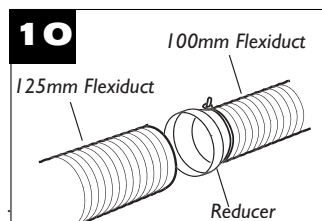
Alternatively, attach the fixing fingers to the light unit using long screws provided.



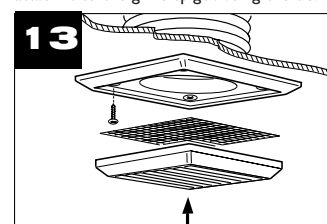
Push the light unit through the ceiling and twist the fingers outwards.



Then tighten the fixing fingers against the ceiling (do not overtighten). To fit the lamp see overleaf. Refit the internal finisher



Fit the reducer to the end of the ducting using ties provided.



Fix grille back plate using plugs and screws. Snap on the external grille. Note: If exhaust is through a wall, ensure the grille louvres slope downwards.

Coding

NE25BT

This system kit includes a Genie/Tops 230V duct mounted fan with an integral run on timer.

GENIE-S or TOPS-S

The fan is fitted with a backdraught shutter and is operated by a remote switch (switch by others).

NE25BTX

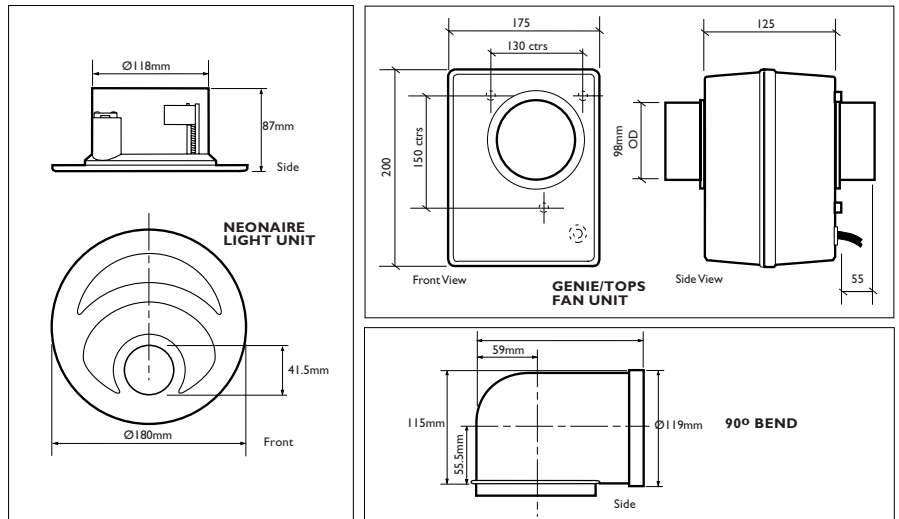
This system kit includes a two speed Genie/Tops 230V duct mounted fan. Fan is designed to run continuously at a low duty (with very low noise levels) and has a 'boost' facility via a remote switch (switch by others).

GENIE-X or TOPS-X

NB: No backdraught shutter.

Technical or commercial considerations may, from time to time, make it necessary to alter the design, performance and dimensions of equipment and the right is reserved to make such changes without prior notice.

DIMENSIONS



WIRING

WARNING!
Isolate electricity supply before starting work.

- The unit must be wired and installed in accordance with IEE or local regulations by a suitably qualified electrician. The fan must only be connected using flexible supply cord.
- The unit must be connected to the double pole isolating switch having a contact separation of at least 3mm at each pole and fitted with a 3A fuse.
- The power supply unit must not be sited within reach of a person using a bath or shower nor within a shower cubicle/ enclosure.
- The Power supply unit is supplied with flying leads. The two red 12V leads should be connected directly to the lamp terminals within the lamp body (see 5 overleaf).
- **The mains cable from the Power supply unit should be connected via an RCD protection device to a mains voltage junction box or similar (supplied by others). See wiring diagram.**
- Connect only one light unit per Power supply unit.

Specifications

Fan unit: 230V 1ph 50Hz. Watts 23W, IP44.

Light unit: 12V 1ph 50Hz. IP44

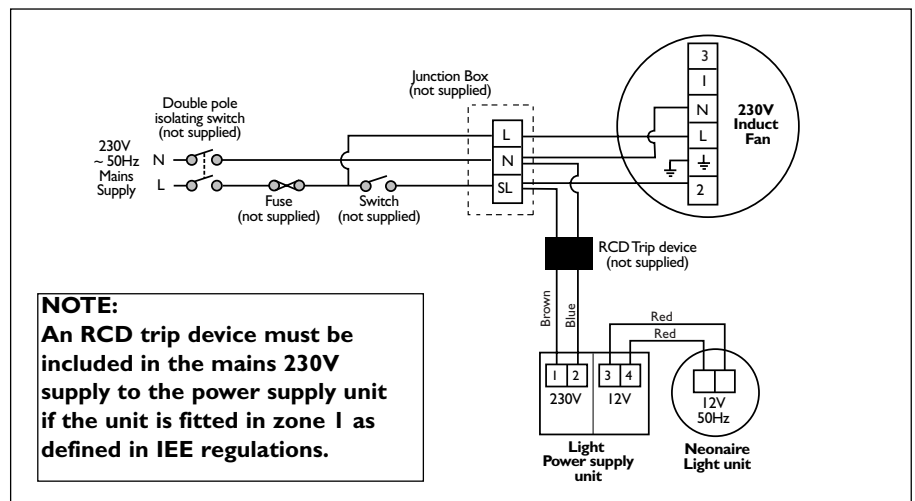
Cable size: 1.00mm² max. (flexible only).

Lamp: 12V dichroic rated at 20W
36° beam angle.
GE Lighting type M269

Lamp replacement

WARNING!
Isolate electricity supply before starting work.

- Remove the internal finisher by pulling down.
- Remove the lamp lens and old lamp by pulling down.
- Fit lamp by pushing up into the lamp holder.
- Push up lamp lens and internal finisher.



MAINTENANCE

CLEANING

LIGHT UNIT

Electrically isolate the unit before commencing any work. Remove the internal finisher by pulling down. Wash in warm water. The lamp body may be cleaned using a brush or damp cloth prior to replacing the finisher.

FAN UNIT

Electrically isolate the unit before commencing any work.

Dust, fluff etc. if allowed, will build up on the motor and / or impellers, shortening the life of the unit and, in severe cases, lead to overheating of the motors. It is therefore strongly recommended that all units are fitted with inlet filters to prevent contamination of motor/fan assembly. The unit should also be inspected and cleaned at least once every six months.

Procedure

At all times take care not to damage, distort or disturb the balance of the impellers.

Separate the two halves of the unit by undoing the screws on the black half of the unit and disengage the two off location tags.

Remove the electronic module.

Spring aside the two clips and remove the fan module. Visually inspect all parts, replace any damaged items.

Using a soft brush or dry cloth remove any dust and dirt from the fan mobile. Stubborn dirt may be removed by careful use of a soft scraper.

Re-fit fan and electronic control module. Ensure that the control module is fully engaged with socket. Before refitting cover switch on the unit momentarily at the isolator and check that the green running light is illuminated before replacing black cover and securing with the screws.

Note:

For maintenance purposes, only the black cover must be removed.

3 Year Warranty

The three year warranty starts from the date of delivery and includes parts and labour for the first year. The labour element is subject to full, free and safe access to the equipment as recommended by the CDM regulations. The remaining two years covers replacement parts only.

NOTE:

Installation & Maintenance of the equipment must be as directed in the instructions provided with the unit.

Service

In the event of a breakdown contact our Service Department. We will be happy to give you more information.

Telephone: 02920 858585

Facsimile: 02920 8585

NUAIRE

NuAire Limited

Western Industrial Estate

Caerphilly, United Kingdom CF83 1XH

Telephone: 029 2088 5911 Facsimile: 029 2088 7033

Email: info@nuaire.co.uk www.nuaire.co.uk