

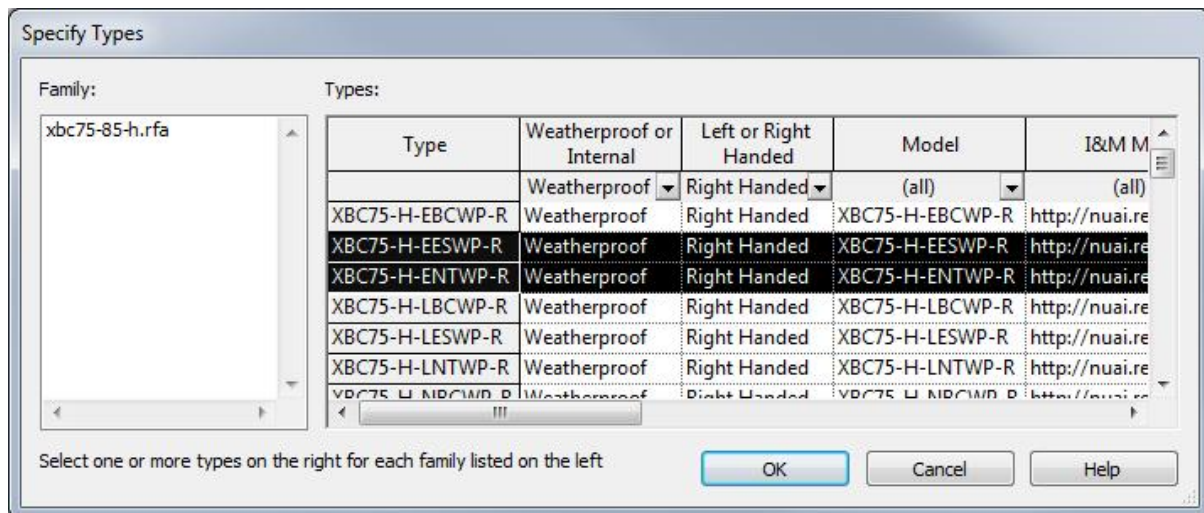
Revit file usage

This Revit family (.rfa file) makes use of a type catalogue.

IMPORTANT:

Please place the .txt in the same folder as the .rfa file with the same name.


When a family is loaded in Revit that uses a type catalogue, the 'Specify Types' dialog appears allowing you to choose the specific types you require within that family.



Selecting only the required types will load only those selections rather than the entire range. This can significantly cut down the resources needed to run the project file.

You are also able to filter the list based on the options available via the drop down headers.

Rules to using families utilising type catalogues:

1. The .txt file must be located in the same folder as the .rfa file.
2. The .txt file must have the *exact* same name as the .rfa file it corresponds to.
3. You must *select* at least one type in the 'Specify Types' dialog (turning it black). Filtering the list will not load that family type.
4.  A family utilizing a type catalogue is not compatible with being dragged-and-dropped into the project from Windows Explorer. You must use the 'Load Family' method.

Load
Family