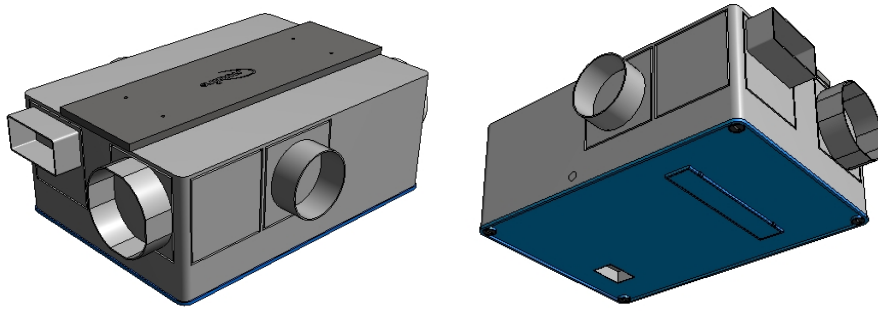


MEVAC Revit Model Features

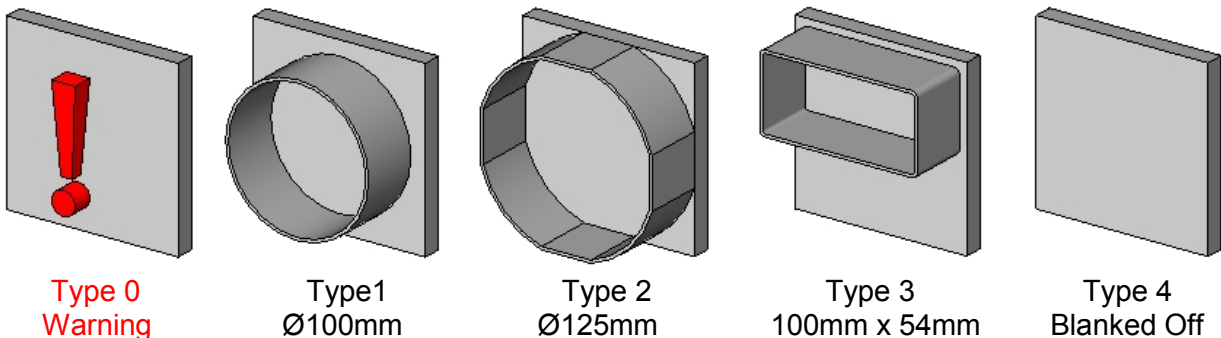
1. The model uses a type catalogue so all variants of the MEVAC fan can be inserted using the same .rfa file (see Read Me file attached for further info)



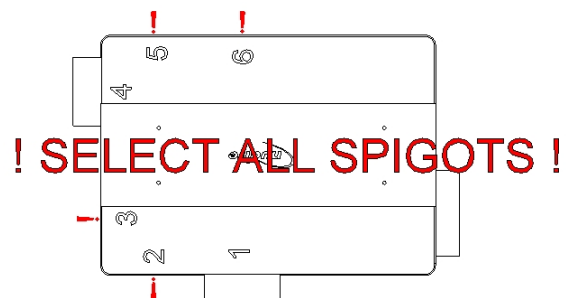
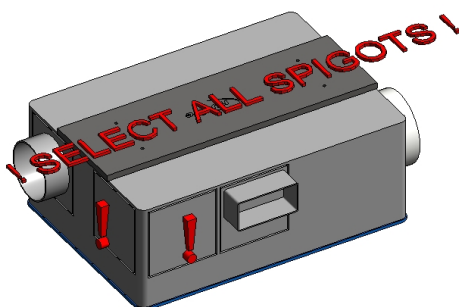
The MEVAC.rfa model attached includes the following options in the Model Properties Category in the Properties Window:

Model Properties	
1=Ø100, 2=Ø125, 3= Rectangular, 4=Blank	
Spigot 6 Type	0
Spigot 5 Type	0
Spigot 4 Type	0
Spigot 3 Type	0
Spigot 2 Type	0
Spigot 1 Type	0
Show Access Clearance	<input type="checkbox"/>

2. '**Spigot 1-6 Type**' lets you swap the type of spigot on the desired point between Ø100mm circular, Ø125mm circular, 110mm x 54mm rectangular and blanked off. This will automatically adjust the duct connector to suit that spigot type.



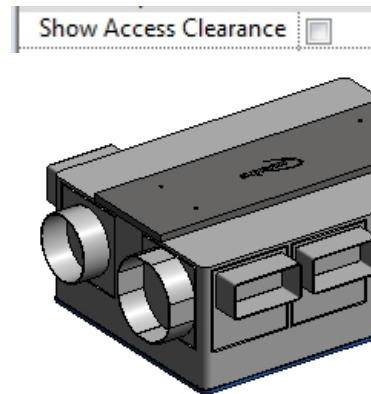
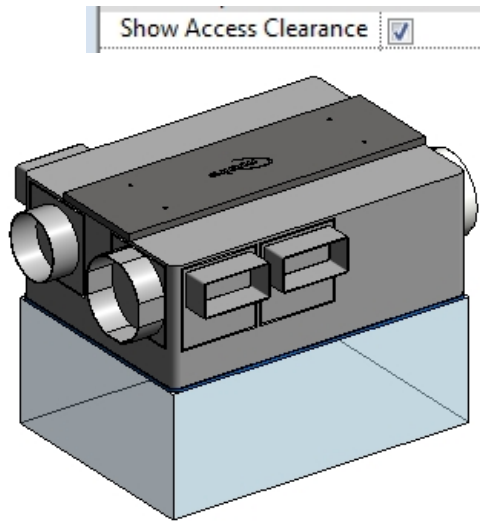
- A guide is shown at the top of the list to show what number to enter for what option.
- **NOTE: All spigot types must be changed, even if blanked off (option 4). No spigot types can be left as '0'.**
- Upon inserting it, a clear red reminder will appear above the model and an exclamation mark next to each spigot yet to be selected.
- The spigot numbers can be seen when in the plan view as below.



Continued on next page...

NOTE: The model code (i.e. MEVAC-S1) will not dictate what spigot options can be used. This is a manual operation and up to the user to choose the corresponding spigots to the code.

3. **'Show Access Clearance'** allows you to show or hide the access clearance transparent area of the model



4. If the model is inserted into the project without using the correct procedure then you will be alerted via a red box and 'DO NOT USE' wording around the model. The model code will also show this same message in the schedules. Please then refer to the additional 'Please read Me File' packaged with this family for the correct insertion procedure.

